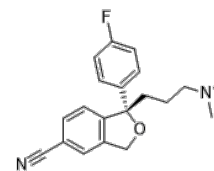


Product Name : Escitalopram
Cat. No. : PC-22519
CAS No. : 128196-01-0
Molecular Formula : C₂₀H₂₁FN₂O
Molecular Weight : 324.40
Target : Monoamine Transporter
Solubility : 10 mM in DMSO



Biological Activity

Escitalopram ((S)-Citalopram) is a potent, selective serotonin reuptake inhibitor with K_i of 0.89 nM (SERT), shows selectivity over both dopamine transporter (DAT) and norepinephrine transporter (NET).

References

Zhang, P., et al., J Med Chem, 2010. 53(16): p. 6112-21.

Caution: Product has not been fully validated for medical applications. Lab Use Only!

E-mail: tech@probechem.com